

*Visit* \_\_\_\_\_  
**Barton County**  
*Missouri*

[visitbartoncounty.com](http://visitbartoncounty.com)



***Walk in the Footsteps  
of American Legends***

# Welcome to Barton County!

Tucked into the crossroads of the Midwest, Barton County, Missouri invites you to experience a true slice of Americana—where scenic landscapes, rich history, and small-town charm come together in one unforgettable destination.

Located along I-49 between Kansas City and Joplin, and just minutes from the iconic Route 66, Barton County is the perfect place to pause, explore, and experience something real.

Trade traffic for open skies. Trade schedules for simple moments. Here, you'll find everything from prairie landscapes and historic sites to local shops, hometown dining, and community events that bring people together year-round.



It's easy to get here.  
But once you arrive,  
you might find it a little  
harder to leave.





- 04 ..... **GET TO KNOW BARTON COUNTY**
- 06 ..... **EXPLORE. EXPERIENCE. ENJOY.**
- 14..... **PLAN YOUR TRIP AROUND THE FUN**
- 22.... **RIGHT OFF THE ROUTE**
- 24.... **TASTE THE FLAVOR.**
- 28.... **OUTDOOR ADVENTURE**
- 32.... **AMISH HANDMADE & HOMEMADE GOODS**
- 34..... **HIDDEN GEMS AROUND EACH CORNER**
- 36..... **LAMAR, MISSOURI**
- 40..... **LIBERAL, MISSOURI**
- 42..... **GOLDEN CITY, MISSOURI**
- 43..... **MINDENMINES, MISSOURI**
- 44..... **BUSINESS INDEX**

*However long you're here,  
we're glad you came.*



The Tourism Division of Barton County is managed through the Barton County Chamber of Commerce. Discover local attractions, events, dining, and more by visiting our dedicated tourism website at [www.visitbartoncounty.com](http://www.visitbartoncounty.com).

110 W 10th Street • Lamar, MO 64759 • 417-682-3595



# Get to Know the Heart of Barton County

Out here, where the prairie stretches wide and the horizon feels endless, Barton County's story began the same way many American stories did—with hard work, determination, and a belief in building something that would last.

Long before highways crossed through and towns took shape, this land was open tallgrass prairie—wild, beautiful, and full of possibility. Today, you can still experience a piece of that original landscape at **Prairie State Park**, where roaming bison and rolling hills offer a glimpse into what this region looked like more than a century ago.

**BARTON COUNTY  
IS THE BIRTHPLACE OF  
MISSOURI'S ONLY U.S.  
PRESIDENT**

As settlers arrived, they didn't just build homes—



they built a community. One grounded in agriculture, shaped by resilience, and strengthened by neighbors who understood the value of lending a hand. That same spirit still defines Barton County today.

This is also a place that quietly shaped history. Just a few steps from the heart of Lamar stands the ***Harry S. Truman Birthplace***—the starting point of a man who would go on to lead a nation. His story is a reminder that even the smallest towns can leave a lasting mark on the world.



And not far from there, another name tied to the American frontier found its beginning here - ***Wyatt Earp***, who served as Lamar's first constable. Wyatt Earp Park pays tribute to Wyatt Earp and his short time in Lamar a chapter filled with love, loss, and heartbreak. It was here that pieces of his story began to form, setting him on the path to becoming the legendary lawman known across the American West.

Today, Barton County is a place where that history is still alive—not just in landmarks, but in everyday life. You'll see it in the downtown square, in family-owned businesses, in community events that bring people together, and in the pride of the people who call this place home.



# Explore. Experience. Enjoy.

Whether you're here for a few hours or a full weekend, Barton County offers something you don't always find—room to explore, time to slow down, and experiences that feel real.



## PRAIRIE STATE PARK

Step into Missouri's natural past at Prairie State Park, one of the last places where visitors can experience what this landscape looked like before settlement. Rolling hills, native wildflowers, and a roaming herd of bison make every visit a little different.

More than 25 rare and endangered plant and animal species have been recorded at the park, including some not found anywhere else

in Missouri. A reintroduced bison herd freely grazes across the prairie, shaping the land with trails, grazed patches, and wallows.

Today, less than 65,000 acres of Missouri's original tallgrass prairie remain, and Prairie State Park protects the state's largest remaining tallgrass prairie landscape. Visitors can enjoy scenic hiking trails, monthly guided Bison Saunters, and exhibits inside the Regal Tallgrass Prairie Nature Center.





## HARRY S. TRUMAN BIRTHPLACE

Step inside the humble home where one of America's most influential presidents began his journey. The Harry S Truman Birthplace State Historic Site preserves the simple frame house where Harry S Truman was born on May 8, 1884.

Visitors can walk through the rooms where Truman's story began and learn how his upbringing helped shape his character, honesty, and leadership. Period furnishings help bring the late 1800s to life, offering a glimpse into the everyday world that influenced one of America's most respected presidents. Knowledgeable guides share fascinating stories about Truman's life, his family's time in Lamar, and the values of hard work, patriotism, and plain speaking that stayed with him throughout his presidency.

Visitors from across the world travel to Lamar to experience this important piece of American history. Whether you are a history enthusiast, or simply exploring Southwest Missouri, the Truman Birthplace offers a meaningful and memorable stop in the heart of Barton County.





## BARTON COUNTY MEMORIAL PARK

The Barton County Memorial Park is a three-acre site created in 2019 to honor World War II veterans and preserve the memory of the former Barton County Memorial Hospital.



Originally built in tribute to the 69 brave men from Barton County who gave their lives during World War II, the hospital stood as a lasting symbol of sacrifice and service.



One of the park's most striking features is a Danforth-style anchor, measuring 94 inches and weighing 3,000 pounds, on loan from the Naval History and Heritage Command.

Additional park memorials includes: A 44' War Memorial, which features seven black granite triangles detailing major USA wars, and six 20' flagpoles for each military branch. A 9' tall red V symbolizing VICTORY proudly sits in the middle. Leading up to the War Memorial is the Walk of Honor, featuring engraved pavers with the names of those that have served from this county, in war or peace time.





## THE JEFFERSON HIGHWAY

The Jefferson Highway was established around 1915 as part of the National Auto Trail system and became known as the “Pines to Palms” highway, stretching from Canada to New Orleans. Named after President Thomas Jefferson, the route

passed through Lamar in several different alignments over the years and was originally marked with simple “JH” logos painted on telephone poles before later using signs and porcelain markers.



# JH

Historical photos even show JH markings near the old Commercial Hotel at 9th and Gulf. In the late 1920s, the highway was absorbed into the new U.S. numbered highway system and eventually bypassed by interstate highways. Today, the historic Jefferson Highway—older than Route 66—is seeing renewed interest and preservation efforts across the country. ~ *Joe Davis Barton County Historical Society*

## JACK'S TRACTORS

Jack's Tractors is a must-see in Barton County. This extensive collection spans a lifetime of acquiring John Deere farm implements, including a historic Waterloo Boy tractor, numerous antique tractors, toys, and rare John Deere memorabilia. This tractor collection is filled with decades of photos, awards, and collectibles that are priceless to our community.



1106 Maple Street • Lamar, MO 64759  
Call Before Arriving • 417-682-1903



## WYATT EARP PARK

Wyatt Earp Park, located on the northeast corner of the Lamar Downtown Square, honors one of the most legendary lawmen of the American West and his early connection to Barton County. Wyatt Earp was born on March 19, 1848, in Monmouth, Illinois, and arrived in Lamar during the summer of 1869 to join his family, who had already settled in the area.

At just 21 years old, Wyatt was appointed Lamar's constable on November 26, 1869, following the resignation of his father, Nicholas Earp.

When the Earp family arrived, Lamar was rebuilding and growing after the devastation of the Civil War. Barton County had been heavily raided during the conflict, leaving much of the area destroyed and nearly abandoned. Yet by the late 1860s, the town was experiencing renewed growth and opportunity, with more than 1,000 residents and a promising future ahead.

Wyatt Earp's time in Lamar coincided with an exciting period in the community's history. The town was constructing its first church, railroads were expected to cross through Barton County, and the City of Lamar officially incorporated in March of 1870. The election of young Wyatt Earp as the town's first constable reflected the spirit and optimism of a community beginning a new chapter.

Today, Wyatt Earp Park serves as both a tribute to that history and a gathering place for the community. Featuring a bronze statue of Wyatt and his wife Urilla, a music pavilion, and open event space, the park hosts concerts, festivals, holiday celebrations, and community events throughout the year.



Surrounded by Lamar's historic downtown square, the park blends frontier history with small-town hospitality, making it a unique stop for visitors exploring Barton County.



## STILABOWER OBSERVATORY

The Stilabower Public Observatory is one of the few community-owned observatories in the nation. Its unique aspect is its handicapped-accessible design.

This facility boasts a 14-inch telescope, computerized tracking, and a digital imaging system. Recently, an updated

telescope allows visitors to input coordinates or objects, which allows the telescope to track them across the sky. The facility is open on selected evenings by special appointment.



## LIBERAL, MO

Liberal was founded in 1880 by lawyer George Walser, who envisioned creating a community for “free thinkers.” Today, Liberal is the second-largest town in Barton County and is surrounded by generations of family farms that continue to shape the area’s strong agricultural heritage and welcoming atmosphere.

One of Liberal’s most treasured historic landmarks is the Shiloh School, the oldest surviving one-room schoolhouse in Barton County. Opened in 1869, the school educated local children for more than 80 years before closing in 1952. Originally located about six and a half miles northwest of Liberal, the building was later relocated near Liberal High School to help preserve this important piece of local history. In addition to serving students, the Shiloh School also functioned as a stagecoach stop between Lamar, Missouri, and Fort Scott, Kansas, connecting early travelers across the region.



Another reminder of Liberal’s railroad heritage is the historic Frisco Depot. Built in 1881, the depot played an important role in the growth and development of the community during the railroad era. Though it has been moved several times throughout Liberal’s history, the depot now sits on South Main Street beside City Hall, where it continues to

stand as a symbol of the town’s connection to transportation and commerce in Southwest Missouri.



Liberal is also known for its close proximity to Prairie State Park, one of Missouri's most unique natural attractions. The park features thousands of acres of native tallgrass prairie, hiking trails, and a roaming herd of American bison, offering visitors a rare glimpse into the landscape that once covered much of the Midwest. Whether

exploring local history, enjoying scenic countryside, or experiencing the beauty of the prairie, Liberal offers visitors a peaceful and authentic taste of rural Missouri.



## **GOLDEN CITY, MO**

The city of Golden City was first established as a trading post and quickly grew into a bustling city. In the 1880s, Golden City saw a period of rapid industrialization and was home to the first railway in the region.

During the 20th century, Golden City experienced its peak population in which the town has since strives to continually grow and improve.



The City Museum is a must-see destination for visitors and locals alike. Visitors can explore the museum's different sections, covering topics such as the city's founding, its growth, and its major historical events. Located at City Hall, the museum offers a comprehensive look at the city's rich and varied history.



# Plan Your Trip Around the Fun

In Barton County, events aren't just dates on a calendar—they're traditions, celebrations, and moments that bring the whole community together.

## PICNIC IN THE PARK

Every 4th Thursday, March through October, enjoy a relaxing day in Lamar City Park with unique and tasty food trucks offering something for everyone. Bring the family, meet up with friends, and enjoy surrounded by the beauty of the park.



From savory meals to sweet treats, each month brings a variety of flavors and local favorites to try. Whether you grab lunch or dinner to-go or stay awhile, Picnic in the Park is a fun tradition you won't want to miss.

## FIRST FRIDAY CAR CRUISES

First Friday on the Lamar Downtown Square kicks off each April and brings the heart of downtown to life with the sights and sounds of classic Americana.

Vintage hot rods, muscle cars, motorcycles, and beautifully restored classics line the streets as car enthusiasts from across the region gather to show





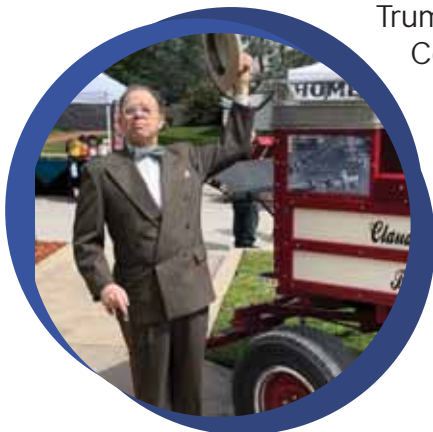
off their rides and swap stories. The rumble of engines, polished chrome, and glowing neon lights create an atmosphere that feels like stepping back in time.

Whether you're a lifelong gearhead or simply looking for a memorable night out, Lamar Cruise Night delivers nostalgia, hometown pride, and timeless automotive charm.



## TRUMAN DAY (MAY)

Celebrate big history with small-town charm each May at the Harry S. Truman Birthplace State Historic Site during the annual Truman Day celebration! This beloved community tradition brings to life with live music, craft and food vendors, historic demonstrations, kids games, contests, and plenty of red, white, and blue spirit. Families can enjoy everything from patriotic activities and local entertainment to shopping unique handmade goods and tasting hometown favorites.



Truman Day captures the heart of Barton County while honoring Missouri's only U.S. President. Whether you're a history enthusiast, or simply looking for a fun spring outing, Truman Day is one of the first major events of the year—and a perfect way to celebrate community, history, and hometown pride.





## STOMPIN' GROUNDS

Get ready for an adrenaline-charged summer as the Stompin' Grounds Events roars into Barton County with some of the biggest and loudest entertainment of the season. From high-energy motorsports to crowd-pleasing action, Stompin' Grounds keeps fans on the edge of their seats all summer long.

Feel the ground shake during the Toughest Monster Truck Tour as massive trucks soar through the air, crush cars, and perform jaw-dropping stunts. Hear the raw horsepower of the I-49 Power Pull Truck and Tractor Pull, where powerful diesel trucks and modified tractors battle it out down the track in a thrilling test of strength and speed. Then buckle up for the chaos and crashing metal of the Missouri Madness Demolition Derby, packed with smoke, noise, and nonstop excitement.



From roaring engines to family-friendly fun, Stompin' Grounds Events delivers unforgettable nights packed with action, excitement, and entertainment for all ages.



## **FAITH, FAMILY & FIREWORKS (JULY)**

Come out for First Baptist Church's Faith, Family & Fireworks each July 3 for an evening of family fun!

Enjoy car shows, live music, kids' activities, and a spectacular fireworks display to end the night. Activities begin at 6:00 p.m.



## **GOLDEN HARVEST DAYS - GOLDEN CITY, MO - (JULY)**

Golden Harvest Days is a week-long celebration honoring a century-old tradition of community, family, and fun. This summertime festival offers something for everyone, from carnival games and bounce houses to the crowd-favorite Great American Bed Race, tractor pull and show, and live music.

Browse a beautiful quilt show, cheer on the little ones in the baby show, and enjoy small-town fun with Tractor Rama, the Garden Tractor and Mini Rod Pull, kids' games, a car cruise, live music, a motorcycle show, and so much more!





## LAMAR FAIR & EXPO

For more than 80 years, the Lamar Free Fair has been a beloved summer tradition, bringing the Lamar Downtown Square to life for four fun-filled days each year. Visitors can enjoy carnival rides and games, 4-H livestock shows, exhibits, blue-ribbon competitions, and all the classic fair food favorites.

The excitement all leads up to the final night, when the Lamar Fair wraps up in country music style with a concert at Wyatt Earp Park. Featuring big-stage production and Nashville-level talent, it's a can't-miss evening that has become a highlight of the fair.

Admission and parking for the Lamar Free Fair are free. Midway rides, concerts, and food are available for purchase.





## **LIBERAL PRAIRIE DAYS - LIBERAL, MO - (SEPTEMBER)**

Celebrate the simple life at its best during Liberal Prairie Days in Liberal — a hometown tradition centered around family, friends, and community spirit.

Spend the day enjoying a wide variety of fun activities including a car, tractor, and motorcycle show, live music, unique craft and food vendors, baby and pet shows, a community parade, inflatables for the kids, and so much more. It's a fun-filled small-town celebration that brings the whole community together each year.



## **AIRPORT FLY-IN (OCTOBER)**

From the earliest days of flight to today's modern aviation, the story of America has always been shaped by those willing to look beyond the horizon.

As part of the America 250 celebration, the City of Lamar Airport Fly-In honors that spirit of innovation, courage, and exploration—bringing together aircraft, pilots, and visitors for a day that reflects how far we've come, and the freedom that flight represents.



Held at the Lamar Municipal Airport, this event transforms the runway into a living tribute to aviation—where the past, present, and future meet in the open sky.



## WYATT EARP FALLFEST - (OCTOBER)

Celebrate the legacy of one of America's most legendary lawmen each October at Wyatt Earp Park, located on the northeast corner of the Lamar Downtown Square.



This fall festival honors Wyatt Earp, Lamar's first constable, with a full day of family-friendly fun and Old West flair. The event features craft and food vendors, live music, a dog show, baby and toddler show, kids activities, and plenty of festive fall atmosphere throughout the day.



Enjoy fall favorite foods, and entertainment that captures the spirit of the Old West.

Whether you come for the music, the vendors, or simply to enjoy a beautiful fall day on the square, FallFest offers a welcoming small-town experience full of history, hospitality, and hometown charm.

# HOME FOR THE HOLIDAYS – (NOVEMBER)

Just before Thanksgiving, gather with us on the Lamar Downtown Square as we flip the switch and officially welcome the holiday season!

Enjoy the annual Christmas lighting ceremony, followed by the magical Lighted Christmas Parade as festive floats, twinkling lights, music, and holiday cheer fill the streets of downtown Lamar.

Santa Claus will make a special appearance at Wyatt Earp Park, ready to visit with children, hear Christmas wishes, and help create lasting holiday memories.



It's the perfect opportunity to kick off your holiday season with sparkling lights, festive music, and hometown spirit all around. Home for the Holidays in Lamar is a Hallmark-style evening that captures the magic of the season and the heart of small-town America.





## Right off the Route

Route 66 wasn't just about getting somewhere—it was about the experience along the way.

Barton County sits just minutes from historic Route 66, placing you close enough to the Mother Road to feel its spirit, but far enough to offer something even better—a place to slow down, stretch your legs, and experience the kind of small-town America that made Route 66 legendary in the first place.

### **BARCO DRIVE-IN**

A true slice of Americana, the Barco Drive-In Theatre offers movies under the stars just like they used to be. Since opening on April 28, 1950, Missouri's longest continually operating drive-in has been a gathering place for generations—where families, friends, and travelers alike come to slow down and enjoy a simpler kind of evening.

There's something special about pulling in at dusk, watching the screen light up against the night sky, and tuning your radio to hear the movie from the comfort of your car. It's a nostalgic experience that captures the spirit of classic road trips and nearby Route 66 adventures—where the journey was just as meaningful as the destination.





## PLAZA THEATRE

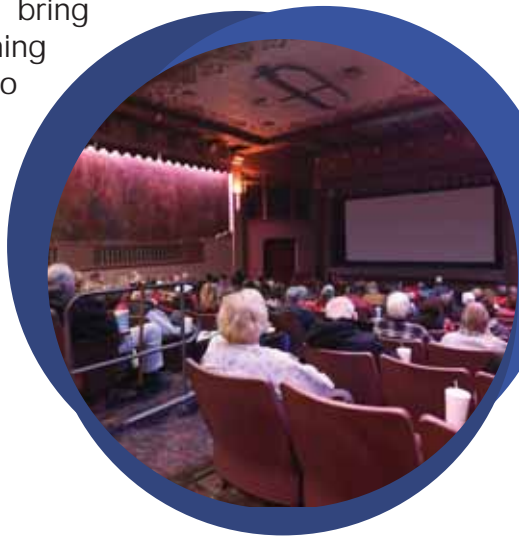
A timeless piece of small-town charm, the Plaza Theatre offers a classic movie going experience right in the heart of downtown Lamar. As a traditional single-screen theater, it delivers a more personal and nostalgic way to enjoy a film—just like it was meant to be.

Though the Plaza was closed for a number of years, it has remained a staple of the Lamar Square for more than 90 years. Reopening in 1998, the theater once again became a community gathering place, welcoming a new generation of moviegoers while preserving its historic roots.

With its enduring character and hometown feel, the Plaza continues to bring people together to enjoy everything from the latest releases to community favorites. Whether you're catching a movie or simply soaking in the nostalgic atmosphere,



the Plaza is a reminder of a time when going to the movies was an event.



*Take the exit,  
You'll be glad you did*

# Taste the Flavor. Discover the Charm.

From family-owned restaurants to small-town shops, every stop offers a chance to experience something real. Whether you're grabbing a quick bite or spending the afternoon browsing, you'll find the kind of places that make you want to stay a little longer.



## **DELI DEPOT** 1033 Gulf St • Lamar

Start your day with fresh, homestyle cooking and big flavor at Deli Depot on the Lamar Downtown Square.

From hearty breakfast favorites like biscuits and gravy and signature omelets to satisfying lunches featuring stacked sandwiches and juicy burgers, Deli Depot serves up classic comfort food in a welcoming small-town atmosphere.



Whether you're grabbing a quick bite or meeting friends on the square, it's a local favorite worth stopping for.



## **EL CABALLO** 1201 Parry St • Lamar

A staple in the Lamar dining scene, El Caballo Mexican Restaurant serves up bold, authentic flavors in a relaxed, welcoming setting.

An easy choice whether you're just passing through or meeting up with friends and family. From sizzling fajitas and hearty burritos, the menu is packed with options that deliver both flavor and portion.



**EL CABALLO DE ORO**

Start your visit with fresh chips and salsa, then settle in and enjoy a laid-back dining experience where friendly service and familiar favorites keep people coming back.



## **MOTHER TUCKERS PIZZA** 2 SE 20th RD • Lamar

Inspired by a longtime Lamar recipe and known for its popular buffet, Mother Tucker's Pizza serves up everything from specialty to classic pizza favorites, along with cheesy breadsticks, a fresh salad bar, and sweet dessert pizzas.

Whether you stop in for the buffet or settle in for a relaxed dinner, you'll find a welcoming atmosphere and the kind of flavors that keep people coming back.



Simple, satisfying, and unmistakably local, Mother Tucker's Pizza is a must-stop when exploring Barton County.

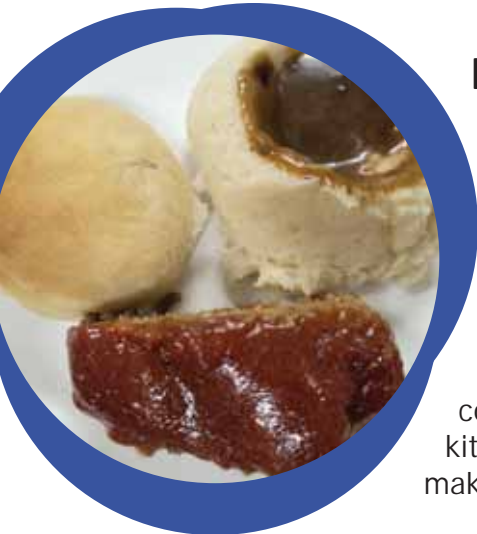
**TRACTORS BBQ** 1008 E 12 St • Lamar  
Stop in for a local favorite and some of the best BBQ around. Tractor's BBQ & Grill serves up a variety of smoked meats, all prepared in their own smoker. You'll also find old-fashioned hamburgers, a wide selection of sandwiches, salads, and more—something for everyone at the table.



With its relaxed, small-town feel and hearty portions, Tractor's delivers a satisfying, meal that keeps locals coming back—and gives visitors a true taste of Lamar.



## *Beyond Lamar Local Gems*



### **MARY'S FLOWER CART CAFE**

136 S Main • Liberal

Located in the heart of downtown Liberal, The Flower Cart Café opened in 2004 inside a beautifully remodeled historic drug store building.

Guests are treated to home-cooked meals served at old-style kitchen tables by a friendly staff that makes everyone feel right at home. The



menu features comforting favorites including soups, salads, sandwiches, and rotating daily specials. Be sure to save room for dessert — homemade pies, cinnamon rolls, and fresh baked treats are local favorites.

Whether you're stopping in for lunch with friends or simply craving a warm meal and hometown hospitality, The Flower Cart Café offers a relaxed dining experience that feels both nostalgic and inviting.



**COOKY'S CAFE** 519 Main • Golden City  
Cooky's Café in Golden City, MO is a cozy roadside café specializing in classic, no-frills comfort food.

Since opening in 1942, Cooky's has built a longtime reputation for homestyle cooking, generous portions, and the kind of small-town hospitality that makes you feel right at home.



Whether you're a local regular or just passing through, you'll find hearty favorites

like crispy fried chicken, slow-cooked brisket, burgers, and daily specials served fresh from the kitchen. The welcoming atmosphere and simple, satisfying meals are a reminder of the kind of café traditions that never go out of style.



And of course, no visit is complete without a slice—or whole pie—of their legendary homemade pies. With flavors that have become a local tradition, many will tell you that you simply can't leave Cooky's without taking one home.





# Outdoor Adventure

## LAMAR CITY PARK

A proud centerpiece of the community for more than 100 years. This historic park continues to be a favorite gathering place for friends, families, and neighbors to relax, play, and enjoy time outdoors.



The park offers something for everyone, from peaceful green spaces to active recreation. Visitors will find a fully equipped RV park, eight baseball and one softball fields, four concession stands, and restroom facilities throughout the grounds.



Amenities include an enclosed shelter with attached restrooms, six covered pavilions, a fish pond, a one-mile walking and biking trail, a children's playground, two smaller play areas, two lighted basketball courts, and a lighted tennis court with pickleball lines.



Home to a wooden covered bridge and authentic Santa Fe caboose, Lamar City Park offers the perfect setting to simply unwind in one of Lamar's most historic and scenic spaces.



## LAMAR CITY LAKE

Lamar City Lake is a scenic 250-acre reservoir located just outside the heart of Lamar. Originally constructed to serve as the city's primary water source, the lake has long been a favorite destination for recreational fishing and outdoor enjoyment.

With the city now transitioning to a new well system, plans are underway to further enhance the lake's role as a recreational destination for both residents and visitors.

The lake already offers a variety of amenities that make it ideal for a relaxing day outdoors. Visitors can enjoy multiple picnic tables, a covered picnic area perfect for family gatherings or group events, three fishing docks with easy water access, and a covered boat dock for added convenience.

Self-service kayak rentals are also now available, making it even easier to explore the lake at your own pace. Whether you're casting a line, enjoying a quiet picnic, paddling across the water, or simply soaking in the serene atmosphere, Lamar City Lake offers a refreshing escape just minutes from town. Fishing and boating permits can be obtained at Lamar City Hall.





## WHEELER PARK

Wheeler Park is one of Lamar's newest parks, located in the Wheeler subdivision off East Sixth Street. This beautiful neighborhood park features a two-acre fishing pond, playground, and a shelter with restroom facilities, making it a great spot for families and outdoor relaxation.

The park is also home to the Memorial Avenue of Trees, where Red Sunset Maples have been donated in memory of loved ones or to commemorate special events. With its peaceful setting and meaningful tribute, Wheeler Park is a lovely place to enjoy nature and reflect.



## JEREMY'S CREEK GOLF COURSE

At Jeremy's Creek, you're guaranteed to find a friendly face and a warm welcome. Just minutes away from Lamar City Park, there nine-hole golf course accommodates all.

No matter where your game stands, you will enjoy the affordably priced golf at Jeremy's Creek Golf Course. They are open seven days a week with a professionally stocked clubhouse, and a beautiful 9-hole golf course.

Our Jeremy's Creek Golf Course memberships provide reciprocal access to all our other Maxim Golf properties. There's no better time to start improving your game than now!



LAMAR  
**FAIR**  
1943-2026

Celebrating 83 Years



# STARS, STRIPES & FUN FAIR NIGHTS

**AUGUST 26 TO 29, 2026**  
**LAMAR, MISSOURI**



MIDWAY RIDES, CARNIVAL FOOD, BBQ, PARADE,  
4H LIVE STOCK SHOWS, LIVE MUSIC, CAR,  
MOTORCYCLE & TRACTOR SHOWS

LEARN MORE



# Amish Handmade & Homemade Goods



<b>*Oak Lawn Bulk Foods &amp; Sunflower Bakery</b> (581 NW 1st Lane).....	<b>30</b>
(417) 279-2767 • M-S • 8am to 5pm	
<b>*Sunny View Greenhouse</b> (159 W. V Hwy •(417) 262-3695•M-S•8am-5pm • Spring Flowers).....	<b>31</b>
<b>*Borntrager Vinyl Products</b> (166 West Hwy V (417) 884-5420•M-S•8am-5pm).....	<b>32</b>
<b>*Rolling Acres Family Farms</b> .....	<b>33</b>
(726 NW 30th LN•(417) 262-3334•M-S•8am-5pm • Home Grown Beef, Pork Chicken & Fresh Eggs)	
<b>*Hershberger Supplies</b> (669 NW 30th LN•(417) 884-5005•M-F•8am-5pm • Gardening Supplies).....	<b>34</b>
<b>*Bar B Leather Shop</b> (305 NW 60th RD •(417) 262-1837•M-S•8am-5pm • Handcrafted Leather) .....	<b>35</b>
<b>*Triple "L" Tack Shop</b> (340 NW 50th RD•(417) 682-1672•M-S•8am-5pm • Fee & Equine Supplies).....	<b>36</b>
<b>*Countryside Greenhouse</b> (585 NW 45th RD•(417) 681-0286•M-S•8am-6pm•Spring Flowers).....	<b>37</b>
<b>*Country Lane Variety</b> (660 NW 45th LN•(417) 884-2080•M-W/F-S•8am -5pm•Fabrics, Kitchen Items).....	<b>38</b>
<b>*Detweiler Farm</b> (489 W Hwy V •(417) 843-6561•M-S•8am-5pm • Fall Pumpkins/Mums) .....	<b>39</b>
<b>Centennial Roots</b> .....	<b>40</b>
(425 E C Highway • centennialroots.com •Homestead from pasture and garden to farmhouse and kitchen)	

Take a journey back as you explore homemade, handcrafted, and unique items from skilled craftsmen.







# Hidden Gems Around Each Corner

No visit to Barton County would be complete without experiencing Lamar’s Downtown Square. Lamar’s Constitution Square is crowned by the majestic Barton County Courthouse, a striking landmark that has stood at the heart of the community since 1889.

Rebuilt following the Civil War and later updated with exterior renovations over the years, the historic building still proudly serves as the Barton County Courthouse today. Its towering presence and rich history make it both a centerpiece of the square and a lasting symbol of the community’s resilience and heritage.

<b>RETAIL</b>	<b>NUMBER</b>
<b>Castle Shoe Shop (Deli Sandwiches)</b> (112 W. 10th St.).....	<b>1</b>
<b>Barton County Chamber Office/Visitor Center</b> (110 W10th).....	<b>2</b>
<b>Found: A Thrift with a Purpose</b> (1013 Gulf St.).....	<b>3</b>
<b>Isenhower Lumber Company</b> (903 Gulf St.).....	<b>4</b>
<b>Junk Yard Farm Girl</b> (118 W 10th St).....	<b>5</b>
<b>Lamar Greenhouse</b> (103 East 9th).....	<b>6</b>
<b>Morrison Printing</b> (110 E. 10th St.).....	<b>7</b>
<b>Plant Haven</b> (1020 Broadway St).....	<b>8</b>
<b>The Market</b> (1030 Broadway St.).....	<b>9</b>
<b>Wildflower Soul</b> (123 11th St W).....	<b>10</b>



## RESTAURANT/SPECIALTY SHOPS

	NUMBER
Deli Depot (1033 Gulf St.).....	35
Bearded Bee Coffee Company (1022 Broadway).....	36
Bamboo House (1201 Gulf).....	37
The Belt Cocktail Company (1033 Gulf Street).....	38
Heavenly Daylight Donut Shop (1019 Gulf St.).....	39

## ATTRACTIONS

Barton County Historical Society (1004 Gulf (Basement of Courthouse *M-F Hrs 1-4pm).....	80
Plaza Theatre (107 W 11th St.).....	81
Tenth Street Farmers Market (1001 Poplar St Moore Pavilion).....	82
Thiebaud Auditorium (105 E 11th St).....	83
Wyatt Earp Park (906 N Broadway St).....	84



# Lamar

## Shopping, Restaurants & Attractions

Beyond downtown, Lamar is home to many unique shops and locally owned businesses waiting to be explored. From specialty gifts and antiques to hometown cafés, florals, and handcrafted goods, you'll discover friendly service and small-town charm around every corner.

Whether you're searching for a one-of-a-kind find or simply enjoying a leisurely afternoon of shopping, Lamar's local businesses offer a welcoming experience that reflects the heart of the community. Be sure to take time to explore them during your visit.

Map of these business are on the next two page.

<b>RETAIL</b>	<b>NUMBER</b>
<b>Blue Top Quilt Shop/CY6</b> (61 SE 1st Ln.).....	<b>11</b>
<b>Cox Health Auxiliary Gift Shop</b> (29 NW 1st Ln.).....	<b>12</b>
<b>Crap Galore Store</b> (502 E 12th St.).....	<b>13</b>
<b>Dollar Tree</b> (605 W 12th St.).....	<b>14</b>
<b>Dollar General</b> (702 E 12th St.).....	<b>15</b>
<b>Faithfull Peddler</b> (13 SW 1st Ln.).....	<b>16</b>
<b>Freedom Firearms &amp; Tactical</b> (1205 E. 12th St.).....	<b>17</b>
<b>Good Samaritan Shop</b> (1301 Parry St.).....	<b>18</b>
<b>HC Tee Company</b> (453 S Hwy O) (Small Inset Lower Left).....	<b>19</b>
<b>Heartland Tractor</b> (505 West 12th).....	<b>20</b>
<b>Heritage Tractor</b> (510 West 12th St.).....	<b>21</b>
<b>KD's Flooring and Mattress, LLC</b> (700 W 12th St.).....	<b>22</b>
<b>National TV Sales &amp; Rental</b> (605 12th St W).....	<b>23</b>
<b>New Beginnings by Design Consignment Shop</b> (1111 E 12th St.).....	<b>24</b>
<b>Tea Shirt Shoppe</b> (105 Jefferson St.).....	<b>25</b>
<b>Tractor Supply</b> (805 West 12th St.).....	<b>26</b>
<b>Vintage Chaos</b> (37 C SW 1st Ln.).....	<b>27</b>
<b>Walmart</b> (29 SW 1st Ln.).....	<b>28</b>

## RESTAURANT/SPECIALTY SHOPS

## NUMBER

<b>Bearded Bee Coffee Company</b> (54C SE 1st Ln) .....	40
<b>Dairy Queen</b> (27 SW 1st Ln.) .....	41
<b>El Caballo de Oro</b> (1201 Parry St.) .....	42
<b>Highland Brew</b> (208 12th St.) .....	43
<b>McDonalds of Lamar</b> (1 E Hwy 160) .....	44
<b>Mother Tucker's Pizza</b> (3 SE 20th Rd.) .....	45
<b>Pizza Hut</b> (23 W US-160) .....	46
<b>Sonic Drive-In</b> (37 E. 160 Hwy) .....	47
<b>Taco Bell</b> (21 W. US-160 Hwy) .....	48
<b>Taco Place</b> (810 W 12th St.) .....	49
<b>The Grind Coffee Shop</b> (1206 Cherry St.) .....	50
<b>Tractors BBQ &amp; Grill</b> (1008 E 12th St.) .....	51
<b>Subway</b> (25 W. US-160 Hwy) .....	52

## GAS STATIONS

<b>Casey's</b> 401 E 12th St. ....	60
60 SE 1st Ln. ....	61
<b>Lamar Travel Plaza</b> (43 SW 1st Ln) .....	62
<b>Murphy USA</b> (25 SW 1st Ln.) .....	63
<b>Pete's</b> (101 E 12th St) .....	64

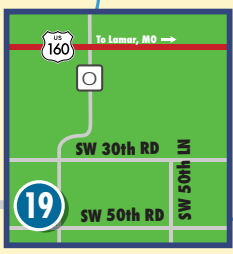
## HOTEL

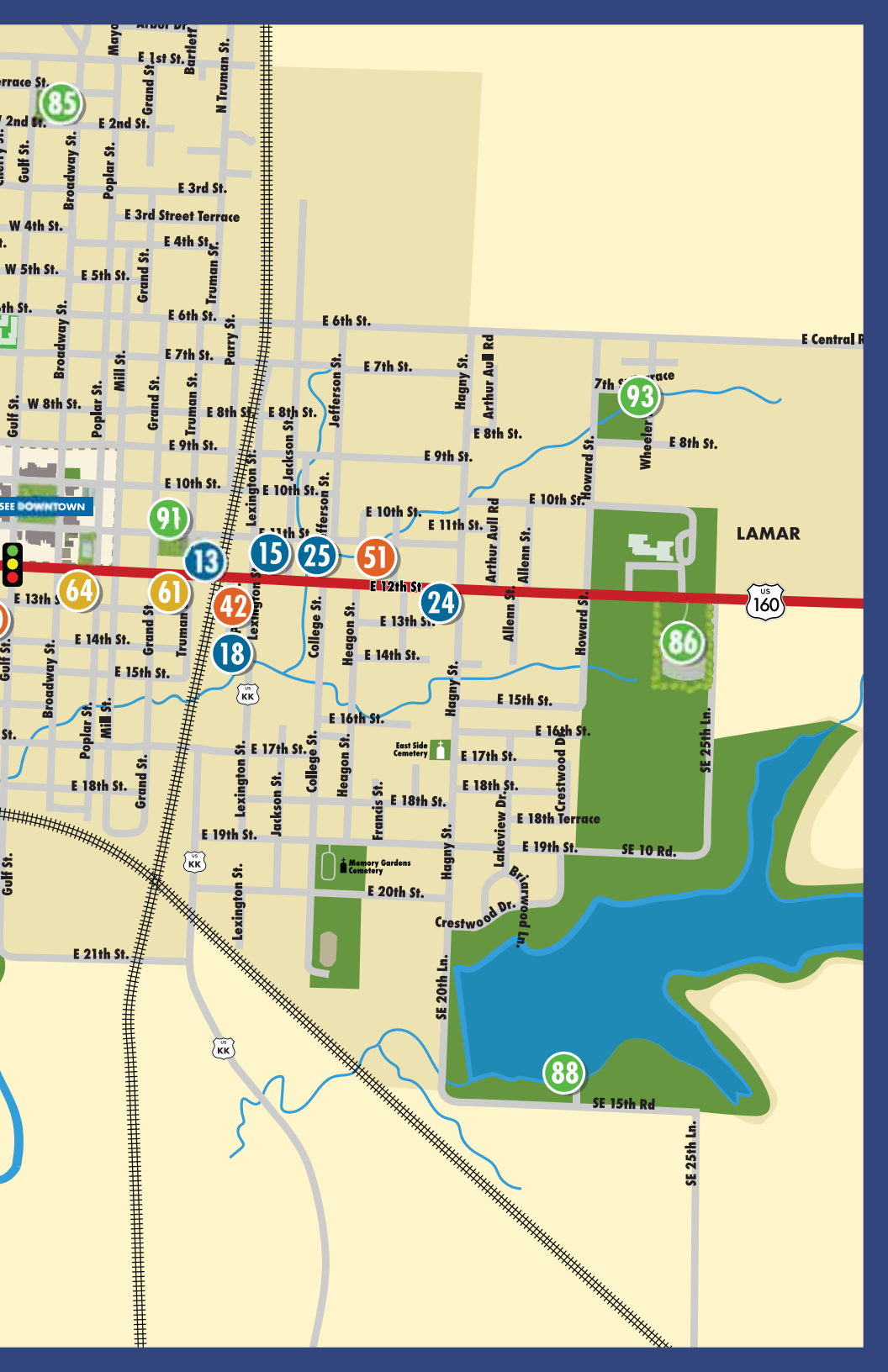
<b>Boarders Inn &amp; Suites by Cobblestone Hotels</b> (45 SE 1st Lane) .....	70
---	----

## ENTERTAINMENT/ATTRACTIONS

<b>Barton County Memorial Park</b> (108 Gulf St) .....	85
<b>Barco Drive-In</b> (57 SE 25th Ln.) .....	86
<b>City Park</b> (1909 Walnut St.) .....	87
<b>City Lake</b> (214 SE 15th Rd #A) .....	88
<b>Jack's Tractors</b> (1106 Maple St • (417) 682-1903 • Call Before Arriving) .....	89
<b>Jeremy's Creek Golf Course</b> (2 SE 20th Rd #A) .....	90
<b>Truman Birthplace</b> (1009 Truman St) .....	91
<b>The Stompin' Grounds</b> (2500 Harvest Rd) .....	92
<b>Wheeler Park</b> (8th & Howard) .....	93



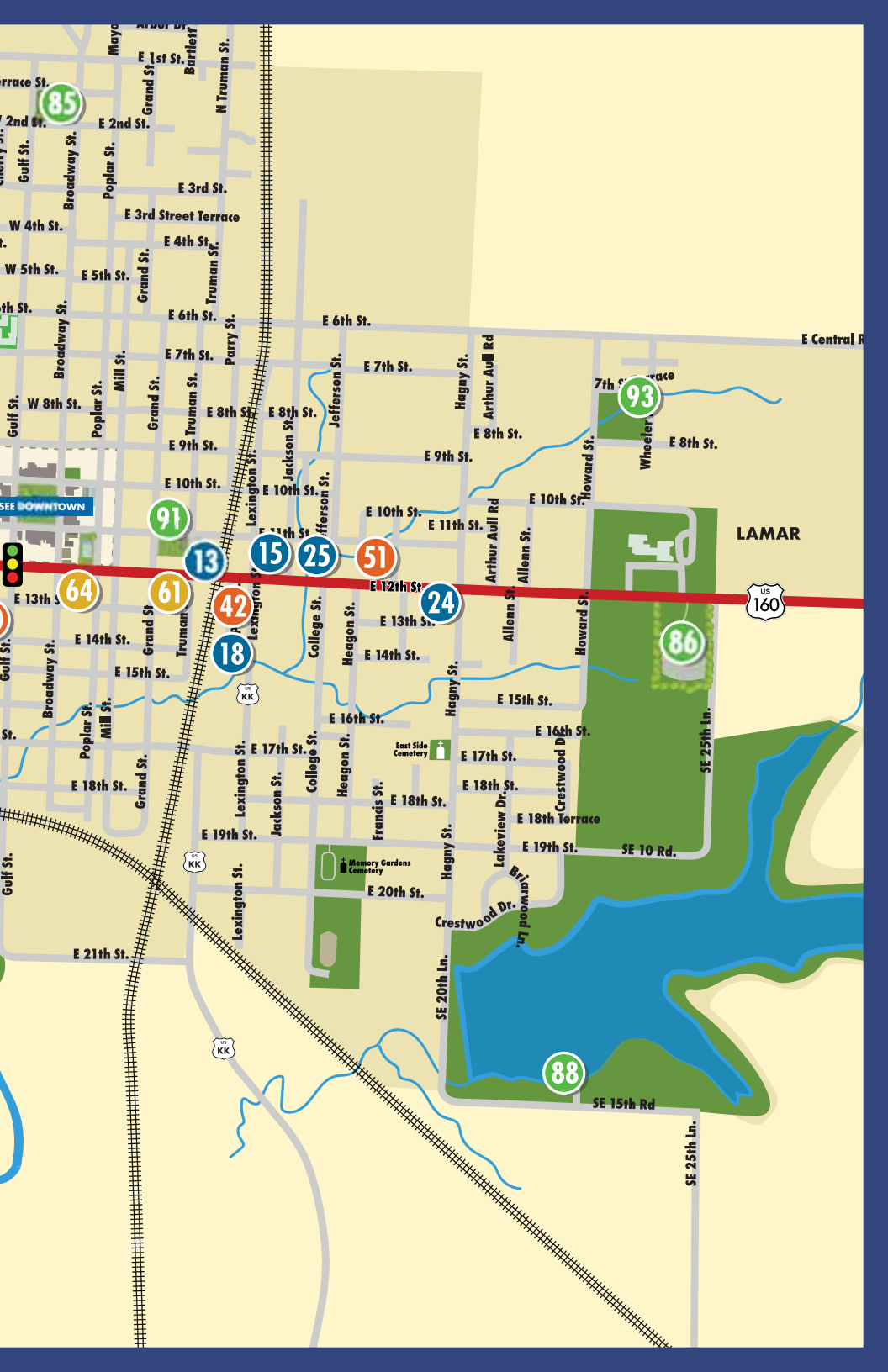




LAMAR



SEE DOWNTOWN



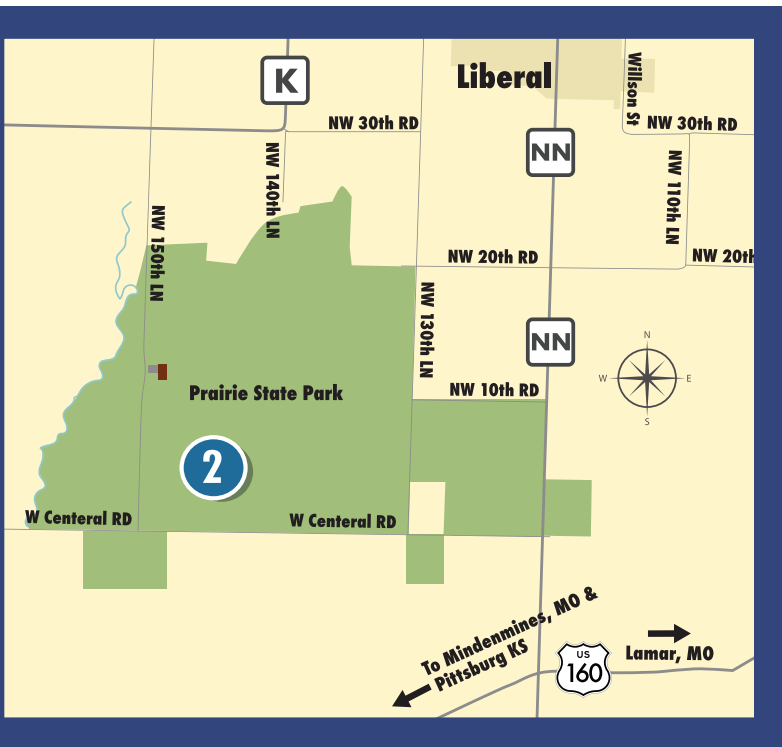


# Liberal, Missouri

Nestled in the northwest corner of Barton County, Liberal offers small-town charm with a welcoming community spirit. Known for its rich agricultural roots and friendly atmosphere, Liberal is a place where neighbors know each other and visitors are always greeted with a smile.

The town is home to local favorites like the historic Flower Cart Café and hosts community events that bring residents together throughout the year. Surrounded by scenic countryside and open skies, Liberal provides a peaceful escape while still being conveniently located near larger regional destinations. Whether you're passing through or staying awhile, Liberal captures the warmth and simplicity that make rural Missouri special.

<b>Liberal City Park</b> .....	<b>1</b>
<b>Prairie State Park</b> (128 NW 150th Ln, Mindenmines, MO • 64769) .....	<b>2</b>
<b>Shiloh School</b> (205 N Payne St.) .....	<b>3</b>
<b>Liberal Depot</b> (209 Main St.) .....	<b>4</b>
<b>Casey's Liberal</b> (1232 W K Hwy) .....	<b>5</b>
<b>JayLou's Designs</b> (134 S. Main St.) .....	<b>6</b>
<b>Mary's Flower Cart Cafe</b> (136 S Main St.) .....	<b>7</b>
<b>Dollar General</b> (223 N Payne St.) .....	<b>8</b>
<b>Barton County Supply</b> (103 N. Main, Liberal, MO) .....	<b>9</b>





# Golden City, Missouri

Rich in small-town character and rural tradition, Golden City offers visitors a glimpse into the quiet beauty of Southwest Missouri life. The community has long been connected to farming and was home to one of the first railways in the region, helping shape its early growth and history.

Golden City is perhaps best known for Cooky's Café, where travelers from across the region stop for classic comfort food and homemade pie. Peaceful country roads and friendly faces make the area feel welcoming year-round. Whether you're passing through or exploring Barton County, Golden City captures the simple charm that makes rural Missouri special.

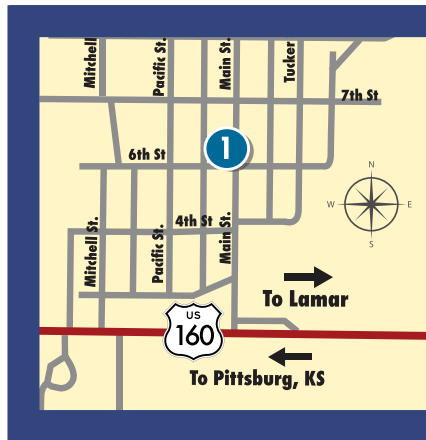
<b>Casey's Golden City</b> (208 C St) .....	<b>1</b>
<b>Cooky's Cafe</b> (519 Main St) .....	<b>2</b>
<b>Dollar General</b> (600 C St).....	<b>3</b>
<b>Wellhouse Coffee and Water Bar</b> (407 Main St).....	<b>4</b>
<b>The Village on Main</b> (509 Main St) .....	<b>5</b>
<b>Golden City Park</b> .....	<b>6</b>
<b>Golden City Historical Society</b> (701 Depot Avenue) .....	<b>7</b>





# Mindenmines, Missouri

Located along the far western border of Barton County, Mindenmines, Missouri is a small community with a proud mining heritage deeply tied to the region's development. Coal mining played a major role in the area's economy, and by 1905, 522 miners were employed in 29 mines across the western side of the county. Both deep shaft and strip mining operations remained active in the area until the 1970s, leaving a lasting mark on the community's identity.



In God We Trust LLC (609 Main St)..... 1

# Business Index

## LAMAR • RETAIL

Bearded Bee Coffee Company  
54C SE 1st Ln  
(417) 295-7715  
1022 Broadway St  
(417) 214-2835

Blue Top Quilt Shop/CY6  
61 SE 1st Ln.  
(417) 681-0330

Cox Health Auxiliary Gift Shop  
29 NW 1st Lane  
Lamar MO 64759  
(417) 681-5100

Castle Shoe Shop &  
(Deli Sandwiches)  
112 W. 10th St.  
(417) 822-6136

Crap Galore Store  
502 E 12th St  
(573) 768-0902

Dollar Tree  
605 W 12th St  
Lamar, MO 64759  
(417) 262-5173

Dollar General  
702 E 12th St  
Lamar, MO 64759  
(417) 262-5460

Dot's Hallmark  
1025 Gulf St.  
(417) 682-5661

Faithfull Peddler  
13 SW 1st Ln  
(417) 214-1890

Freedom Firearms & Tactical  
1205 E. 12th St.  
417-214-3224

Found: A Thrift with a Purpose  
1013 Gulf St.  
320-894-2233

Good Samaritan Shop  
1301 Parry St.  
(417) 682-5396

HC Tee Company  
453 S Hwy O Lamar MO 64759  
(417) 214-1246

Heartland Tractor  
505 West 12th  
(417) 660-7000

Heritage Tractor  
510 West 12th St  
(417) 682-5556

Isenhower Lumber Company  
903 Gulf St.  
(417) 682-5545

Junk Yard Farm Girl  
118 W 10th St  
junkyardfarmgirl.com

KD's Flooring and Mattress, LLC  
700 W 12th St.  
(417) 681-0017

Lamar Greenhouse  
103 East 9th  
(417) 682-6565

Morrison Printing  
110 E. 10th St.  
(417) 682-5065

New Beginnings by  
Design Consignment Shop  
1111 E 12th St.  
(417) 448-4103

Plant Haven  
1020 Broadway St  
(417) 214-5626

Tea Shirt Shoppe  
105 Jefferson St.  
(417) 262-8828

Tractor Supply  
805 West 12th St.  
(417) 682-2112

Vintage Chaos  
37 C SW 1st Ln.  
(417) 682-4770

Walmart  
29 SW 1st Ln.  
(417) 682-5516

Wildflower Soul  
123 11th St W  
(417) 770-5796

## LAMAR • RESTAURANT SPECIALTY SHOPS

Bamboo House  
1201 Gulf  
(417) 682-3159

Dairy Queen  
37a SW 1st Ln.  
(417) 682-2417

Deli Depot  
1033 Gulf St  
(417)-262-5289

El Caballo de Oro  
1201 Parry St.  
(417) 279-2552

Highland Brew  
208 12th St.  
(417) 262-5225

McDonalds of Lamar  
11 E Hwy 160  
(417) 682-3663

Mother Tucker's Pizza  
2 SE 20th Rd.  
(417) 681-0855

Pizza Hut  
23 W US-160  
(417) 682-2166

Sonic Drive-In  
37 E. 160 Hwy  
(417) 682-6182

Taco Bell  
21 W. US-160 Hwy  
(417) 682-3853

Taco Palace  
810 W 12th St  
(417) 682-3787

The Grind Coffee Shop  
1206 Cherry St.  
(417) 660-5501

Tractors BBQ & Grill  
1008 E 12th St.  
(417) 682-6677

Subway  
25 W. US-160 Hwy  
(417) 682-6964

## LAMAR • GAS STATIONS

Casey's • Lamar  
401 E 12th St  
(417) 682-5590

Casey's • Lamar Heights  
60 SE 1st Ln  
(417) 202-8358

Lamar Travel Plaza  
43 SW 1st Ln  
(417) 682-5576

Murphy USA  
25 SW 1st Ln  
(417) 681-0755

Pete's  
101 E 12th St  
(417) 682-3991

## LAMAR • HOTEL

Boarders Inn & Suites by  
Cobblestone Hotels  
45 SE 1st Lane  
(417)-682-6888

## LAMAR • ENTERTAINMENT ATTRACTIONS

Barco Drive-In  
57 SE 25th Ln.  
(417) 682-2434

Barton County Memorial  
Park  
108 Gulf St  
bcmpark.com  
bcmpark108@gmail.com

Barton County Historical  
Society  
1004 Gulf (Basement of  
Courthouse \*M-F Hrs 1-4pm)  
(417) 682-4141

City Park  
1909 Walnut St.  
(417)-682-5851

City Lake  
214 SE 15th Rd  
(417)-682-5851

Jack's Tractors  
1106 Maple St  
(417) 682-1903  
Call Before Arriving

Jeremy's Creek Golf Course  
2 SE 20th Rd # A  
(417) 660-5600

Plaza Theatre  
107 W 11th St.  
(417) 682-6843

Tenth Street Farmers Market  
1001 Poplar St  
Moore Pavilion



Truman Birthplace  
1009 Truman St  
(417) 682-2279

The Stompin' Grounds  
2500 Harvest Rd  
(417) 262-6572

Thiebaud Auditorium  
105 E 11th St  
(417)-682-5851

Wyatt Earp Park  
906 N Broadway St  
(417)-682-3595

## **LIBERAL • RETAIL & RESTAURANT**

Barton County Supply  
103 N. Main , Liberal, MO  
417) 843-2415

Dollar General  
223 N Payne St  
(417) 843-8492

JayLou's Designs  
134 S. Main St.  
Liberal, Mo.  
www.shopjaylous.com  
jaylouscrafts@gmail.com

Mary's Flower Cart Cafe  
136 S Main Street  
(417) 843-3453

## **LIBERAL • ENTERTAINMENT ATTRACTIONS**

Liberal City Park

Prairie State Park  
128 NW 150th Ln,  
Mindenmines, MO 64769  
(417) 843-6711

Shiloh School  
205 N Payne St

Liberal Depot  
209 Main St

## **LIBERAL • GAS STATIONS**

Casey's Liberal  
1232 W K Hwy  
(417) 434-9440

## **GOLDEN CITY • RETAIL & RESTAURANT**

Cooky's Cafe  
519 Main St  
(417) 537-4741

Dollar General  
600 C St  
(417) 986-0145

Wellhouse Coffee and Water Bar  
407 Main St  
(417) 262-4515

The Village on Main  
509 Main St

## **GOLDEN CITY • GAS STATIONS**

Casey's Golden City  
208 C St  
(417) 386-0980

## **GOLDEN CITY • ENTERTAINMENT ATTRACTIONS**

Golden City Park

Golden City Historical Society  
701 Depot Avenue  
(417) 262-2036

## **MINDENMINES • RETAIL**

In God We Trust LLC  
609 Main St  
(620) 423-6600

# 2026 EVENT SCHEDULE



**JUNE 27**  
**MISSOURI MADNESS**  
**NIGHT OF DESTRUCTION**

---



**JULY 17 & 18**  
**TOUGHEST**  
**MONSTER TRUCK**  
**TOUR**

---



**AUGUST 1**  
**I-49 POWER**  
**PULL**

---



**TICKETS ON SALE NOW:**  
**THESTOMPINGGROUNDS.COM**



**Lamar, Missouri**



# Tyler Nance

LIVE IN CONCERT

WITH SPECIAL GUEST

MATT STELL



**SPONSORED BY**



**BARTON MUTUAL**  
INSURANCE COMPANY

**SATURDAY, AUGUST 29, 2026**

**WYATT EARP PARK • LAMAR FAIR & EXPO**  
**L A M A R , M O**



TICKETS ON SALE NOW



[WWW.BARTONCOUNTY.COM/CONCERT](http://WWW.BARTONCOUNTY.COM/CONCERT)